




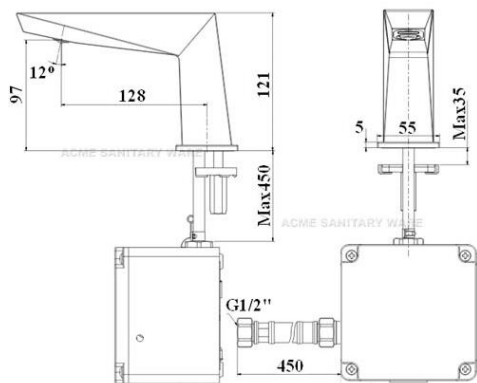
Acme Sanitary Ware Co. Ltd.

1/F, Acme Building, 22-28 Nanking Street, Kowloon, Hong Kong
Tel: 2388 7171 Fax: 2710 8012
Email: acme@acmesanitary.com.hk
Website: www.acmesanitary.com.hk

American Standard

| | | | | | | |
|----------|--|------|--|-----|-----------|--|
| PROJECT | | REF | | REV | ITEM CODE | |
| LOCATION | | DATE | | | PAGE | |

SANITARY WARE SPECIFICATION SHEET

| | | |
|---|---|--|
| Item Descriptions | American Standard (PRC) Chrome plated sensor faucet with Line-Sensor Technology, 6V alkaline battery DC | Illustration/ Drawing |
| Dimensions | L128 x W55 x H121 mm |  |
| Model | CF-8509.D00.50 | |
| Finish | Chrome Plated | |
| Manufacturer | American Standard (PRC) | |
| Source | Acme Sanitary Ware Co. Ltd Mr. Eric Wong / Mr. Don Yuen | |
| Contact Tel/Fax | (852) 2388-7171 / (852) 2710-8012 |  |
| E-mail | acme@acmesanitary.com.hk | |
| Website | www.acmesanitary.com.hk | |
| <p>Line sensor at the spout With PCA aerator to ensure stable water flow under high pressure Safety stop at 59 sec 6V alkaline battery</p> <ul style="list-style-type: none">Consisting of 64-light receiving elements mounted in a straight line at the spout, American Standard's Line Sensor comes equipped with Image Processing Technology to provide unmatched sensor precision compared to a conventional sensor faucet.The streamlined designed faucets also feature aerated water flow to prevent water splashing, offering you an unparalleled experience of both aesthetics and performance for your commercial projects. | | |

Note:

* All information of the above is for reference only. No prior notice is made if any changes.



Acme Sanitary Ware Co. Ltd.

1/F, Acme Building, 22-28 Nanking Street, Kowloon, Hong Kong

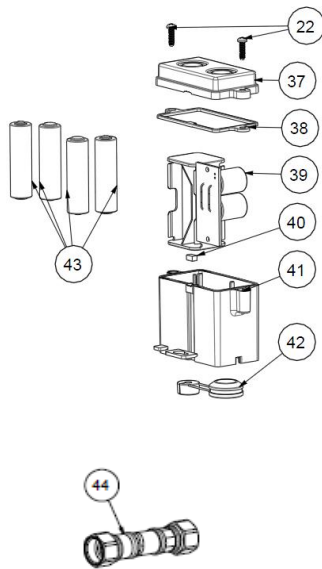
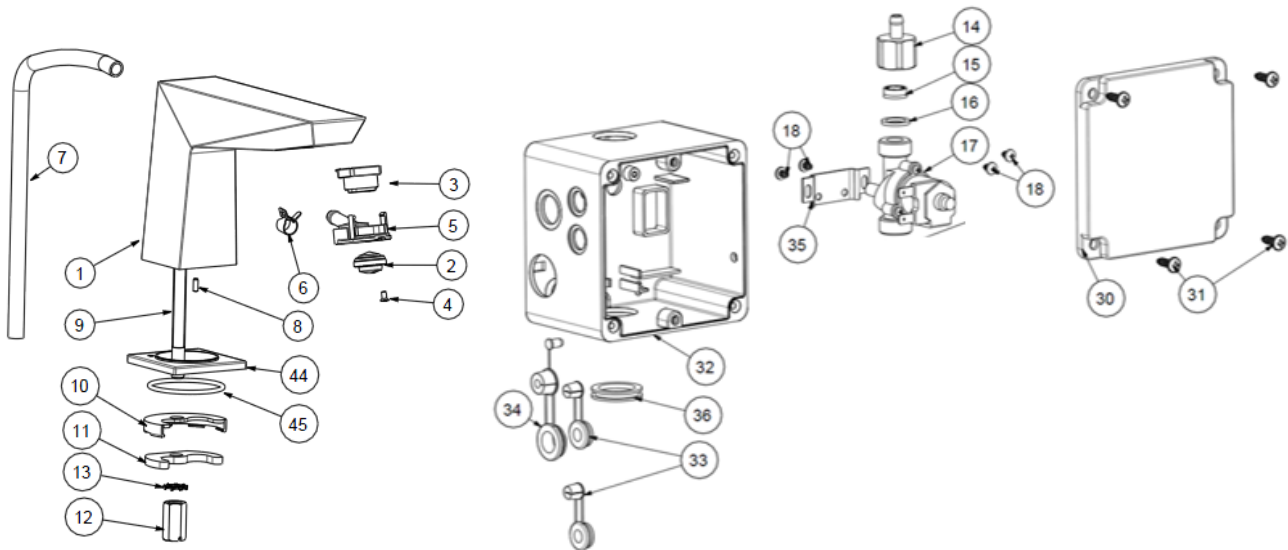
Tel: 2388 7171 Fax: 2710 8012

Email: acme@acmesanitary.com.hk

Website: www.acmesanitary.com.hk

Since 1949

American Standard



| No. | Part Code | Part Des. (EN) | Qty. |
|-----|--------------------|--------------------------------------|------|
| 1 | FFZZ8509-A0050BDPL | Body For A37 Lava. Sensor fau | 1 |
| 2 | FF1-CN521A0002699P | Aerator PCA2.2gpm(45.2053.2.2 | 1 |
| 3 | FF1-CN521S00000044 | Blue Bird Sensor | 1 |
| 4 | FF1-CN521N00000269 | Screw for Minimalistic Slg Ho | 1 |
| 5 | FF1-CN521Z00000264 | Housing for Blue Bird Sensor | 1 |
| 6 | FF1-CN521Z00000287 | Pipe Click for Sensor Faucet | 1 |
| 7 | FF1-CN521T00000038 | PVC Hose(D10*1.5) | 1 |
| 8 | FF1-CN521N00000172 | Bolt M3*8 | 1 |
| 9 | FF1-CN521Z00000346 | SHANK(A917243) | 1 |
| 10 | FF1-CN521G00000238 | Gasket(A911942) | 1 |
| 11 | FF1-CN521J00000432 | Iron Plate A923271 (BVBA) | 1 |
| 12 | FF1-CN521N00000219 | MOUNTING NUT(A906102) | 1 |
| 13 | FF1-CN521Z00000166 | LOCK WASHER | 1 |
| 14 | FF1-CN521J00000146 | Connector for control box | 1 |
| 15 | FF1-CN521A0002599P | Regulator (58.7359.1) | 1 |
| 16 | FF1-CN521G00000034 | Flat Washer ?18.5* ?13*2 | 1 |
| 17 | FF1-CN521S00000001 | Solenoid For Entry Level Sensor Line | 1 |
| 30 | FF1-CN521F00000048 | COVER | 1 |
| 31 | FF1-CN521N00000239 | EJOT-PT-SCREW KB50*16(A918549 | 4 |
| 32 | FF1-CN521Z00000286 | CONTROL BOX | 1 |
| 33 | FF1-CN521G00000306 | New Grommet | 1 |
| 34 | FF1-CN521Z00000081 | Rubbler Plug for Control Box(| 1 |
| 35 | FF1-CN521F00000181 | Fixing Board for Solenoid | 1 |
| 36 | FF1-CN521Z00000080 | Rubbler plug for battery box | 1 |
| 37 | FF1-CN521F00000059 | Cover for EL battery box(tran | 1 |
| 38 | FF1-CN521G00000085 | Sealing washer for cover of b | 1 |
| 39 | FF1-CN521S00000045 | Blue Bird PC Board DC | 1 |
| 40 | FF1-CN521G00000086 | Sealing washer for body of ba | 1 |
| 41 | FF1-CN521Z00000057 | Body for EL battery box(trans | 1 |
| 42 | FF1-CN521Z00000079 | Rubbler plug for control box | 1 |
| 43 | FF1-CN521S00000023 | Alkaline Battery (AA) | 4 |
| 44 | FF1-CN521T00000008 | GS-1 In-Water Hose 1/2inch*45 | 1 |

* All information of the above is for the reference only. No prior notice is made if any changes.